



25 Liddell Way, Ascot, SL5 9UT  
£435,000

 **HORLER**



## 25 Liddell Way, Ascot, SL5 9UT

Nestled in the desirable Liddell Way, Ascot, this charming mid-terrace house is a splendid opportunity for families seeking a comfortable and well-located home. Offered to the market with no onward chain, this beautifully presented property boasts three generously sized bedrooms, making it ideal for family living.



The property benefits from a light and airy kitchen that seamlessly flows into the dining area, creating a perfect space for family meals and entertaining guests. The ground floor also features a convenient downstairs WC, while the well-appointed family bathroom upstairs ensures that all your needs are met.

One of the standout features of this home is the incredibly spacious rear garden, providing an excellent outdoor space for children to play or for hosting summer gatherings. Additionally, the property benefits from parking at the rear, along with many useful indoor and outdoor storage areas adding to the convenience of this lovely home.

Location is key, and this property does not disappoint. Situated just 0.4 miles from Ascot train line, commuting to London and beyond is made easy. Furthermore, it falls within the catchment area for some of the best schools in the region, making it an attractive option for families. Local amenities are also within easy reach, ensuring that everything you need is just a short distance away.

Viewings are highly recommended, as properties in this area tend to sell quickly. Do not miss the chance to make this delightful family home your own; contact us today to arrange your viewing.

#### **General Information:**

Tenure: Freehold

Council Tax Band: D

#### **Legal Note:**

\*\*\*Although these particulars are thought to be materially correct, their accuracy cannot be guaranteed and they do not form part of any contract\*\*\*.

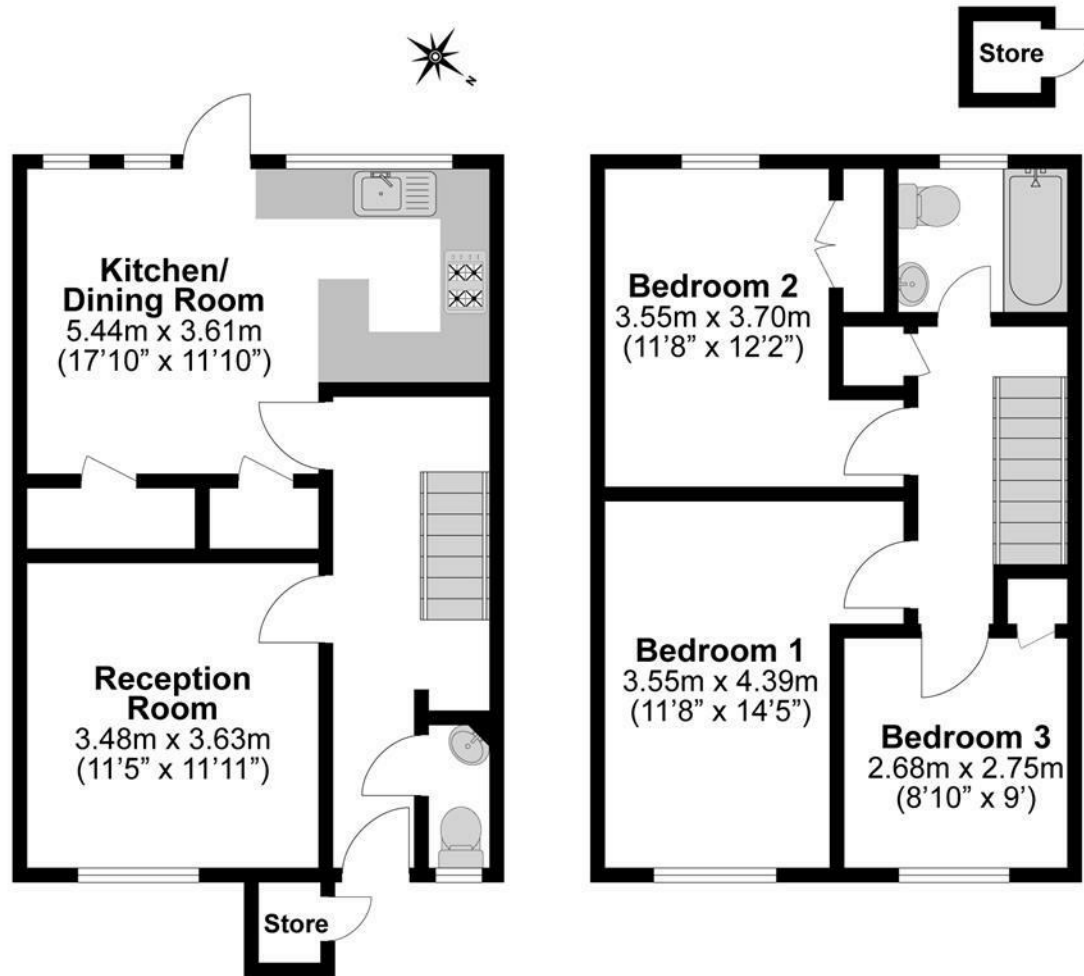












**Illustrations are for identification purposes only,  
measurements are approximate, not to scale.**